

# Information from Japan CCS Co., Ltd.

## 【Site Visit】



Rooftop on Control Building



Visit to Injection Well

## 【CCS Forum】



Eco experiment performance by environmental performer "Ramma-sensei".



Presentation by Ministry  
of the Environment



Presentation by Ministry of  
Economy, Trade and Industry

## • What's New

**CCS Forum was held  
on March 17, 2018.**



The annual CCS Forum, sponsored by Ministry of Economy, Trade and Industry, was held at Grand Hotel New Oji (Tomakomai, Hokkaido), with a total of 315 participants.

The program consisted of the following:

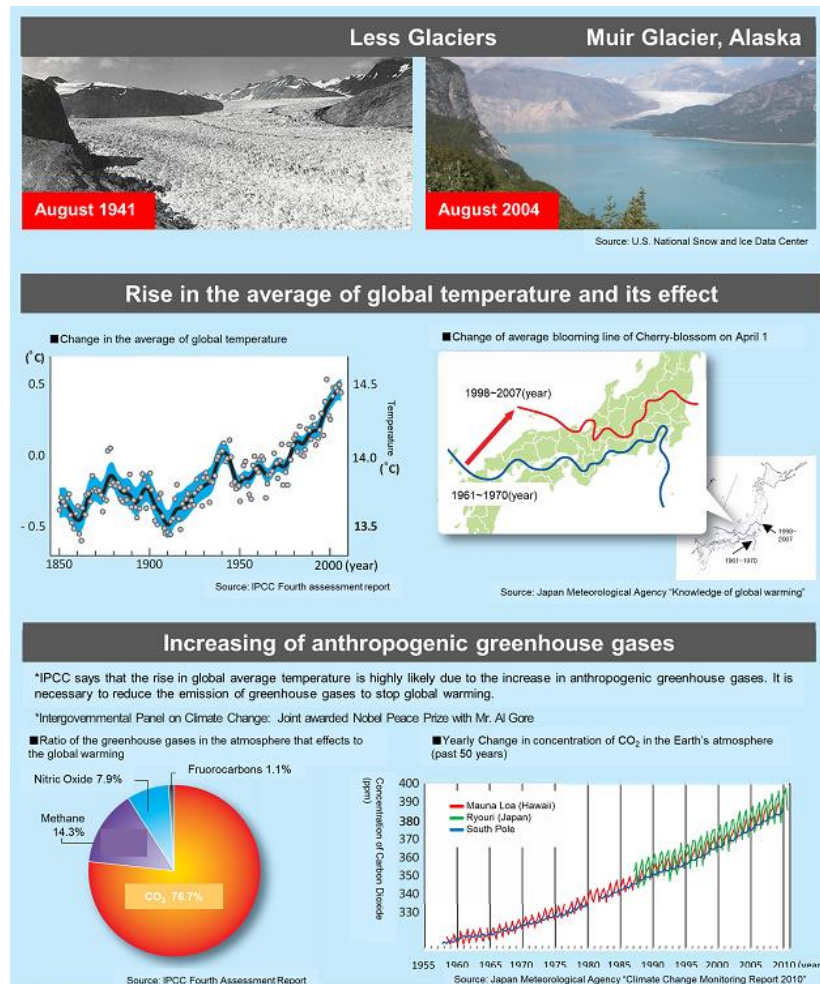
Part 1: Presentations on "Global Warming" by Ministry of the Environment, and "CCS Demonstration Project" by Ministry of Economy, Trade and Industry

Part 2: Eco experiment performance by environmental performer "Ramma-sensei".

In the morning of the same day, a site tour to Tomakomai CCS Demonstration Center for the citizen was held. There were various questions by them such as safety and economy of CCS, and they deepened their understanding on CCS.

# Global warming continues

The natural environment has been changing without our knowing, for example, the decrease of glacier and the rise of average temperature.



# To reduce greenhouse gases

## ■Energy conservation and renewable energy

Eco-friendly cars

Sunlight

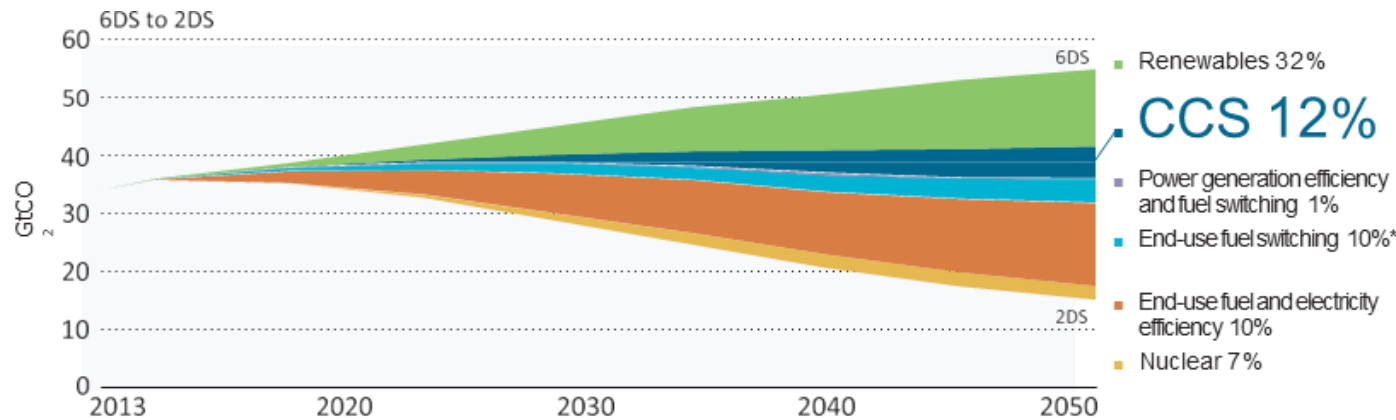
Wind power

Geothermal heat

Biomass



It is believed that in order to significantly reduce the amount of CO<sub>2</sub> emissions, it is essential to implement all global warming mitigation measures in accordance with the role of each technology.



©OECD/ IEA 2016 Technology Perspectives, IEA Publishing. Licence: [www.iea.org/t&e/termsandconditions](http://www.iea.org/t&e/termsandconditions)

\*End-use fuel switching: conversion from coal and oil into low carbon content fuels such as natural gas

CCS is the technology to bridge between now and the next generation with the new energy.

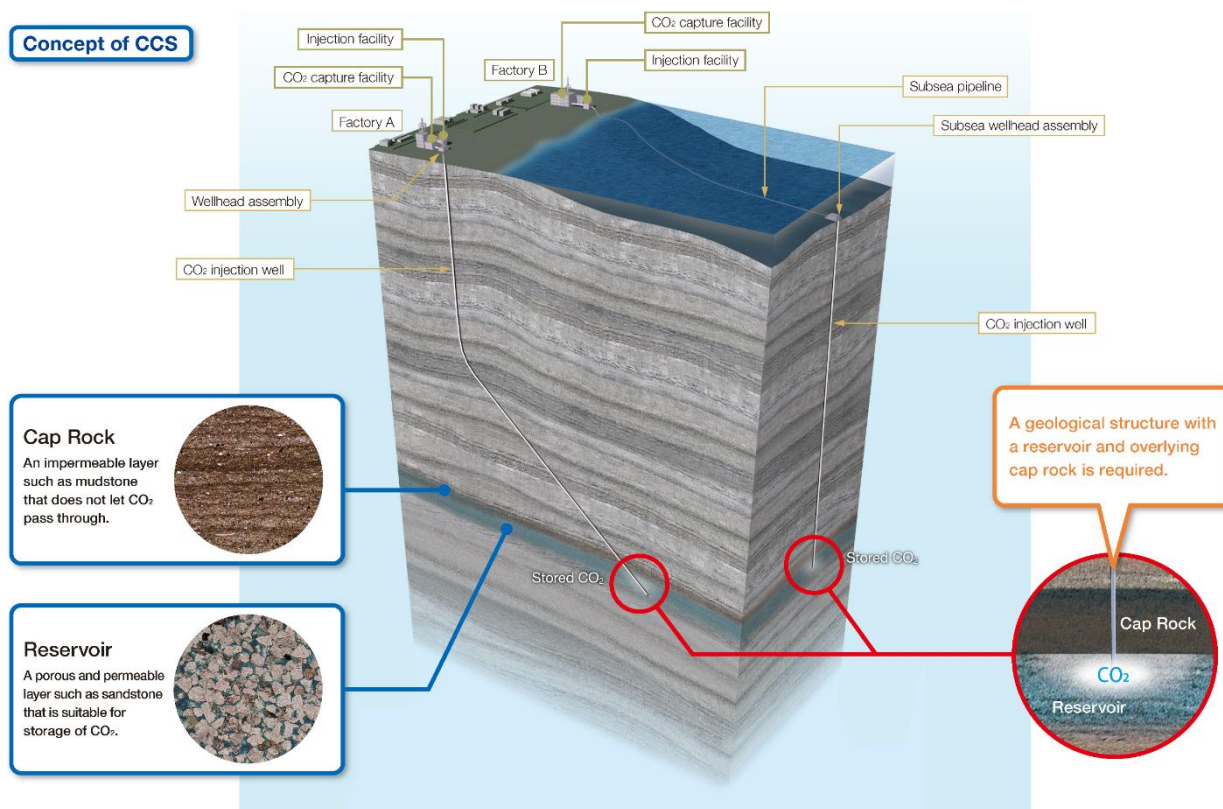
3/19



# What is CCS?

## Carbon dioxide Capture and Storage

### Concept of CCS



CCS is a technology to prevent carbon dioxide (CO<sub>2</sub>) released into the atmosphere emitted by facilities such as power plants and factories. The technology involves capturing the CO<sub>2</sub>, injecting it into underground geological formations and storing it permanently. Along with energy efficiency and renewable energy, CCS helps to tackle global warming.

# How to store CO<sub>2</sub>



## ■ Features of Caprock

Mudstone etc., made of fine mud grains

- Impervious
- Sufficient blocking ability
- Covering reservoir layer widely and thickly

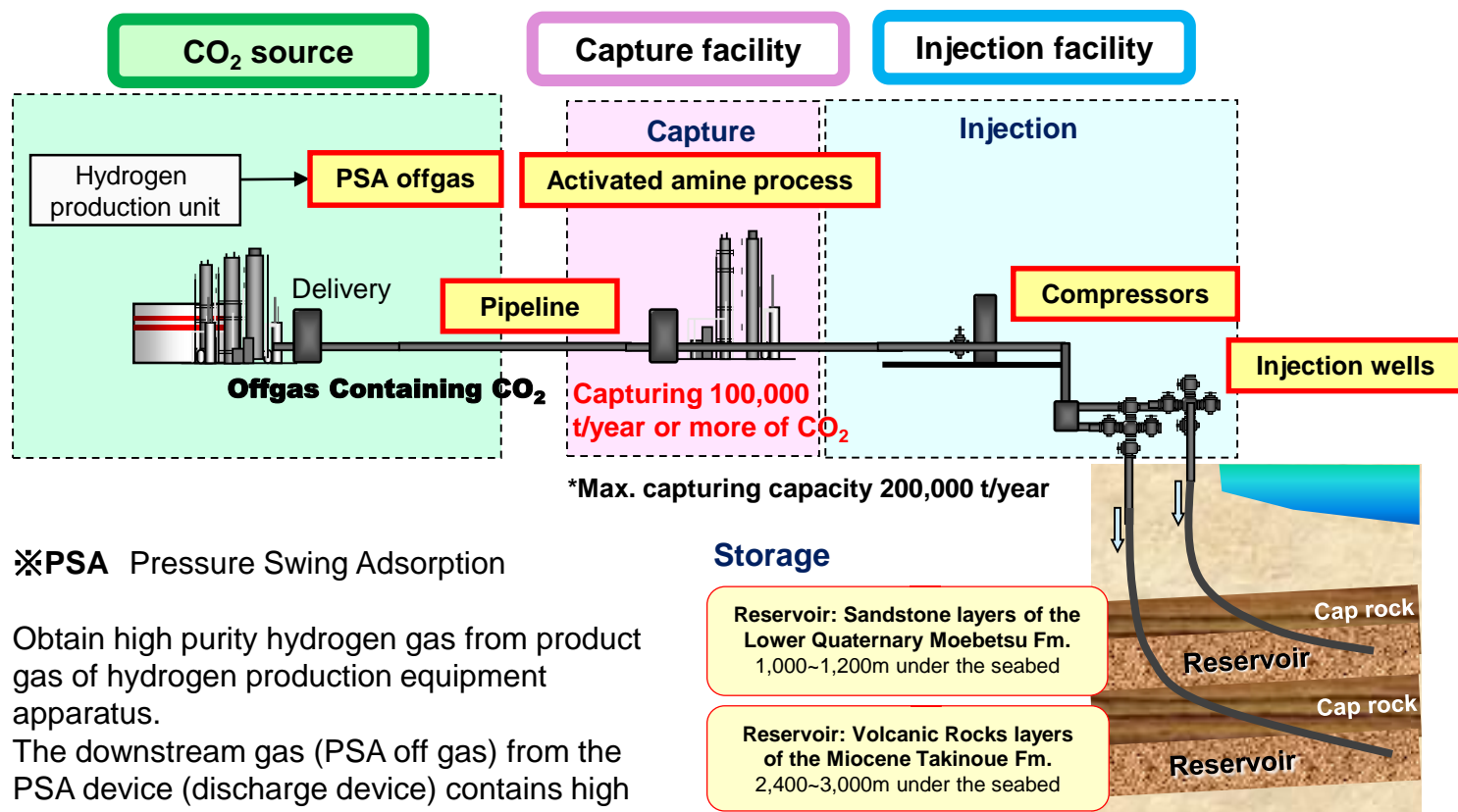
## ■ Features of Reservoir

Sandstone, volcanic rock, etc., made of coarse grains

- Sufficient pore spaces to store CO<sub>2</sub>
- Pervious

Injecting the CO<sub>2</sub> into reservoirs at depths of 1,000 meters or more. The reservoirs are overlain by thick cap rocks that prevent the CO<sub>2</sub> from moving upwards.

# Flow Scheme of CCS Demonstration Project



※PSA Pressure Swing Adsorption

Obtain high purity hydrogen gas from product gas of hydrogen production equipment apparatus.

The downstream gas (PSA off gas) from the PSA device (discharge device) contains high concentration CO<sub>2</sub>.

Source: Ministry of Economy, Trade and Industry Edited from the verification test plan at Tomakomai point

CO<sub>2</sub> is captured from the offgas containing CO<sub>2</sub> generated from the refinery's hydrogen production unit during commercial operation, pressurized (up to 23 MPa) to the pressure required for the injection, and more than 100,000 tonnes of CO<sub>2</sub> per year is injected and stored under the two layers of reservoir at offshore Tomakomai.



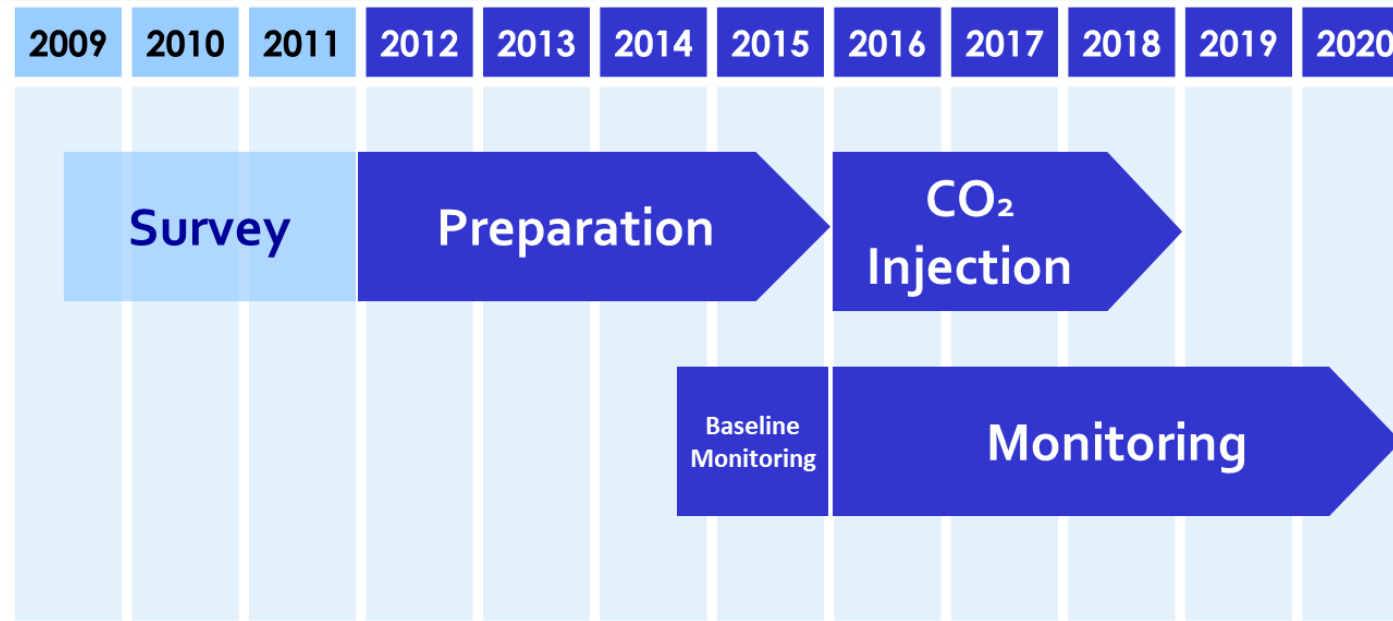
# Tomakomai CCS Demonstration Project Schedule

## ■ From JFY2012 to JFY2015 : Preparation

Drilling of design and construction of facility, drilling of a injection well (a well for pressurizing CO<sub>2</sub> to underground), preparation for demonstration operation, etc. were carried out.

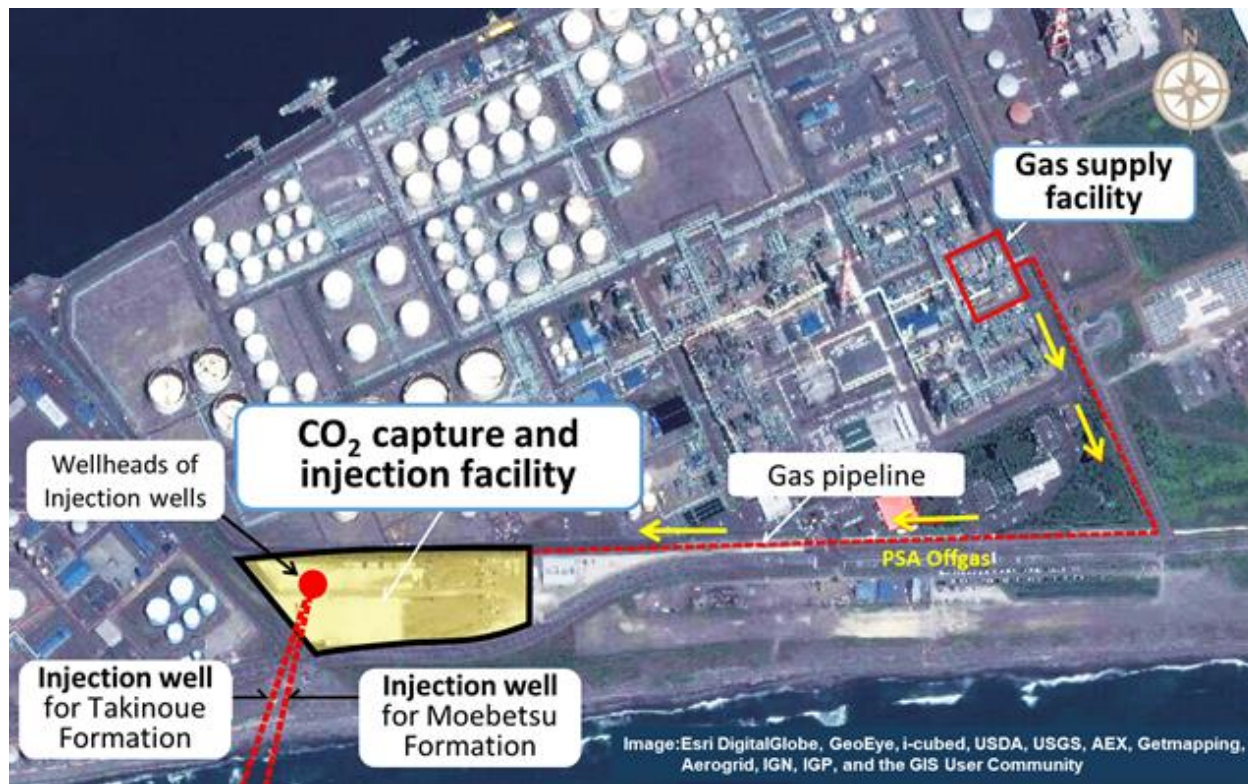
## ■ From JFY2016 to JFY2020 : Monitoring

On April 1, 2016, Japan CCS Co., Ltd. was commissioned by METI to conduct “Tomakomai CCS Demonstration Project (FY2016)”, and on April 6, CO<sub>2</sub> injection has commenced. We plan to inject more than 100,000 tonnes of CO<sub>2</sub> per year for 3 years from 2016 to 2018. Even after termination of the injection, we will continue monitoring of CO<sub>2</sub> behavior for two years.



※Years are in Japanese Fiscal Years (April of calendar year thru March of following year)

## Positional Relation of Onshore Facilities



"Gas supply facility" is a facility to send PSA offgas (CO<sub>2</sub> containing gas) generated in the hydrogen production process of refinery to "Capture and injection facility" through a 1.4 km Gas pipeline.

At "Capture and injection facility", CO<sub>2</sub> is captured with a purity of 99% or more from CO<sub>2</sub> containing gas sent through the Gas pipeline, then increased pressure by the compressor, and injected through 2 injection wells into the reservoir under the seabed for storage.



# Schematic Geological Section



This is the Schematic Geological Section of the CO<sub>2</sub> storage point. CO<sub>2</sub> is injected into two reservoirs Takinoue Formation T1 and Moebetsu Sandstone Formation by two separate deviated wells.

The Takinoue Formation Injection Well is a sloping well with an excavation length of 5,800m and a maximum inclination of 72 degrees. Moebetsu Formation Injection Well is a sloping well with an excavation length of 3,650 m and a maximum inclination of 83 degrees.

# Bird's Eye View of Capture and Injection Facilities





# CO<sub>2</sub> Capture Facilities and Compressors

## 3 staged CO<sub>2</sub> Compressors

Increase pressure  
to the required  
pressure for  
captured CO<sub>2</sub>  
injection



CO<sub>2</sub> Capture Facility  
Capture CO<sub>2</sub> from PSA  
Offgas



# CO<sub>2</sub> Injection Report

Injection was suspended on November 22, 2019.

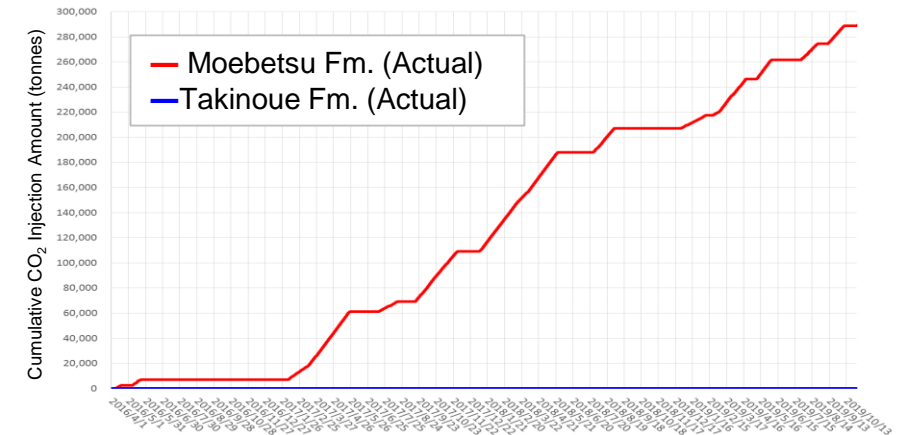
Cumulative CO<sub>2</sub> Injection amount  
(April 06, 2016~November 22, 2019)

**300,110.3**  
tonnes

## Injection Amount in November 2019

	Injection Amount/month (November 2019)	Cumulative CO <sub>2</sub> Injection Amount (As of November 22)
Moebetsu Fm.	10,793.5 tonnes	300,012.2 tonnes
Takinoue Fm.	0.0 tonnes	98.2 tonnes

## Change of cumulative CO<sub>2</sub> Injection Amount



# Monitoring Facilities : Location Relation

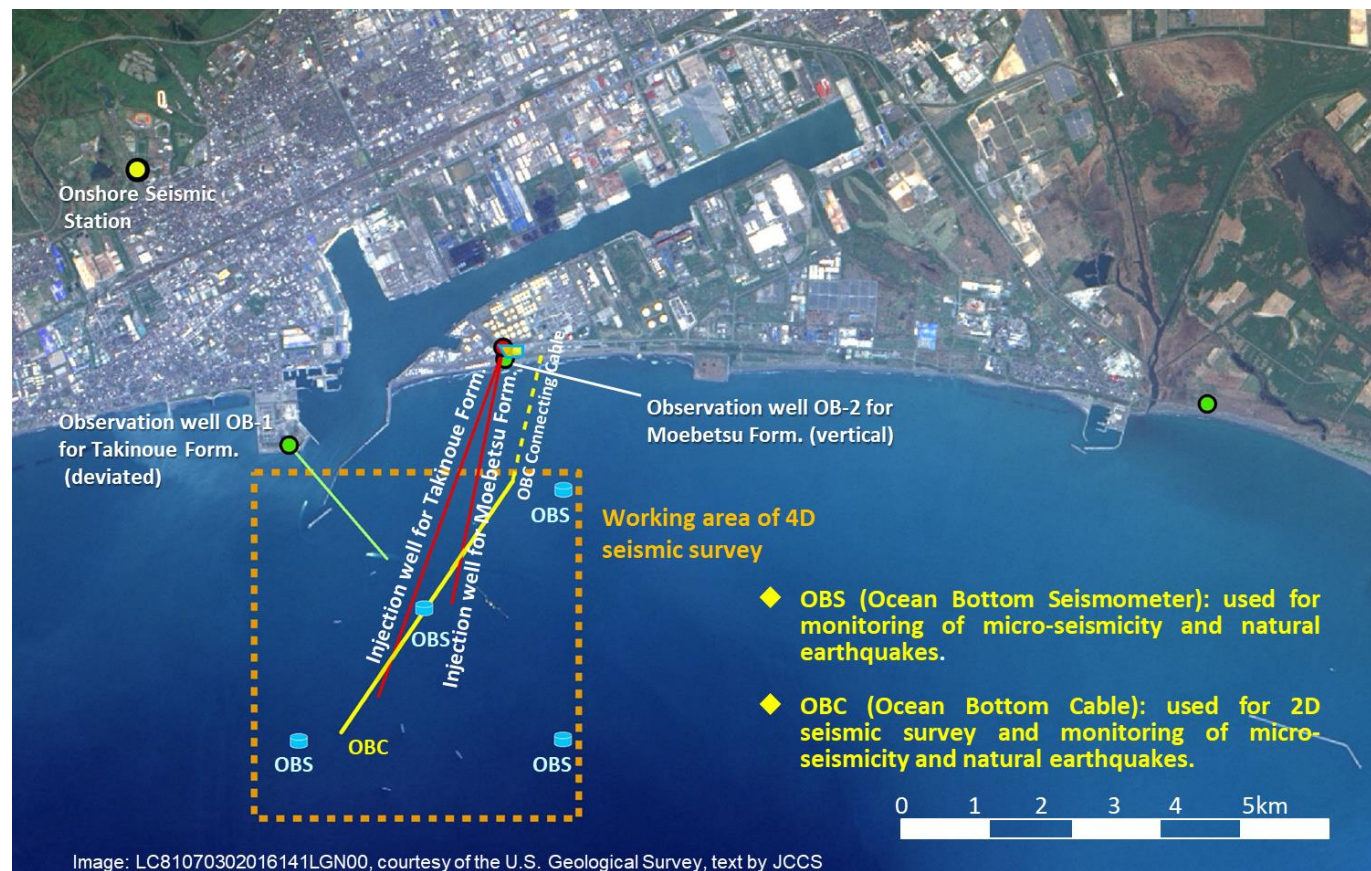


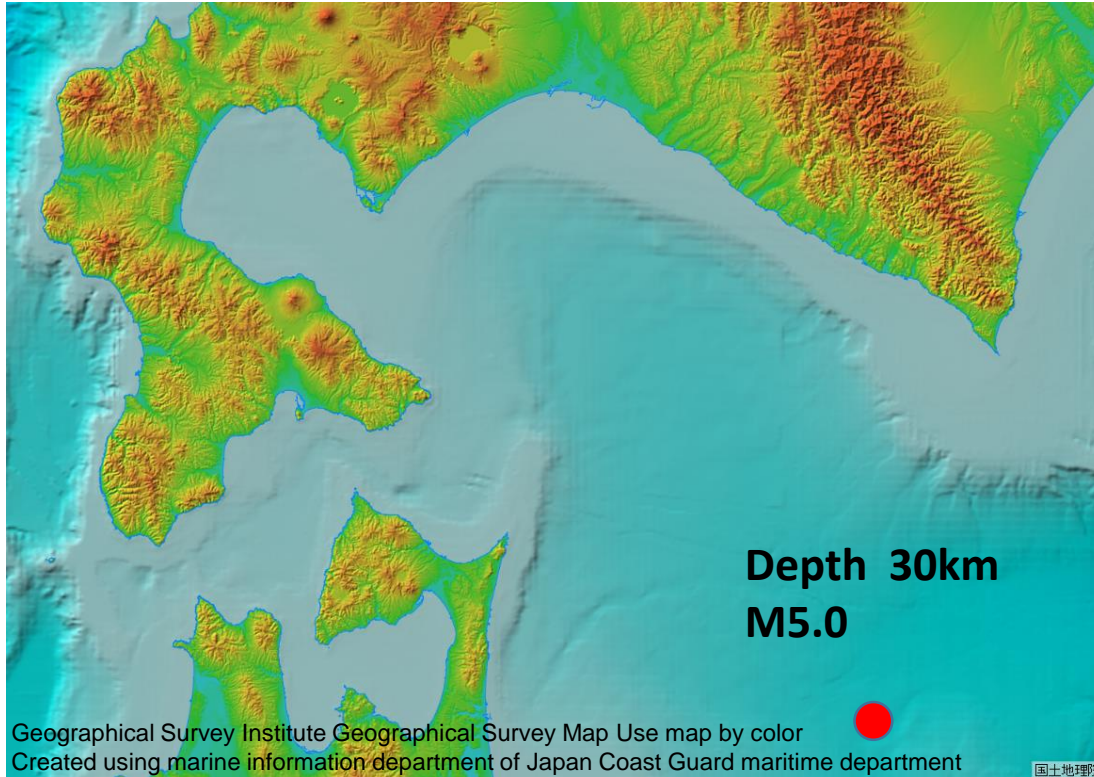
Image: LC81070302016141LGN00, courtesy of the U.S. Geological Survey, text by JCCS

■ Monitoring networks are constructed near and around the CO<sub>2</sub> injection point and continuously monitored over the six years before the implementation of CO<sub>2</sub> injection (1 year), during CO<sub>2</sub> injection (3 years) and after the termination of injection (2 years).

- We survey the pressure and temperature of the formation in the wells - the observation well (3 wells) excavated around the CO<sub>2</sub> injection point and the CO<sub>2</sub> injection well (2 wells).
- We installed a seismograph in the observation well and under the seabed to observe earthquakes (including minute vibrations that will not be felt by the body).
- Survey data is centrally controlled at Tomakomai Demonstration Center and constantly monitored the presence or absence of abnormality.

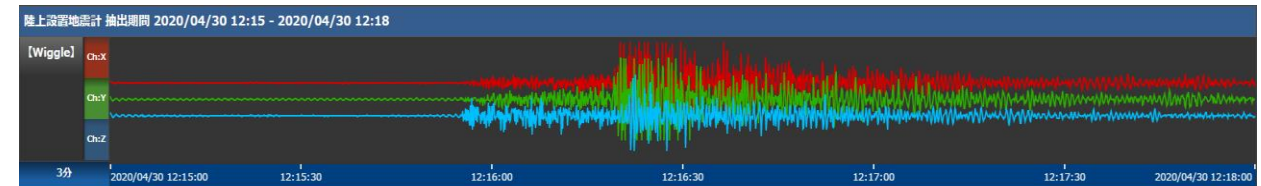


# The most recent noticeable tremors observed in Tomakomai



Observation record of Onshore Seismometer

## Observation record at Midorigaoka Park



### Earthquake Information

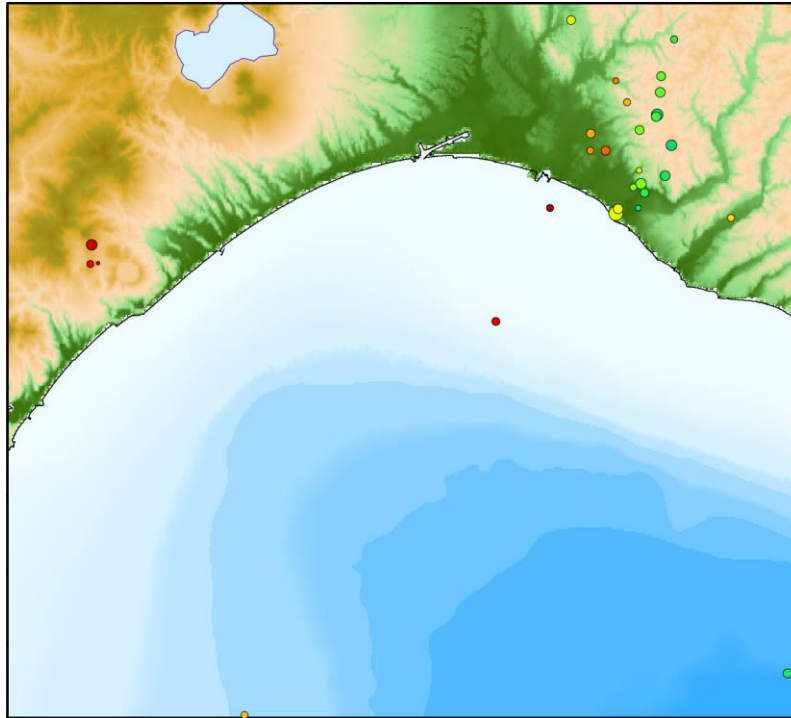
Announced by the Japan Meteorological Agency

Time & Date	12:15 (JST) 30 April, 2020		
Hypocenter	Lat.	40°	54'N
	Lon.	142°	48'E
	Depth	30km	
Magnitude	5.0		
Seismic Intensity at Tomakomai-city	1		

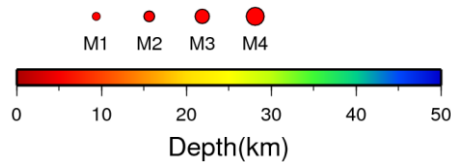
14/19



# Distribution of Natural Earthquakes around Tomakomai



Natural earthquake hypocenter distribution in April 2020



Geomorphic map is prepared from Geographical Survey Institute numerical map 250 m mesh (altitude) and Japan Marine Safety Agency 'Japan Oceanographic Data Center' 500 m mesh water depth data

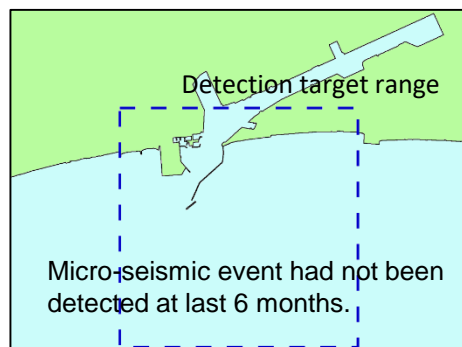


Natural earthquake hypocenter distribution occurred from 2001 to 2010

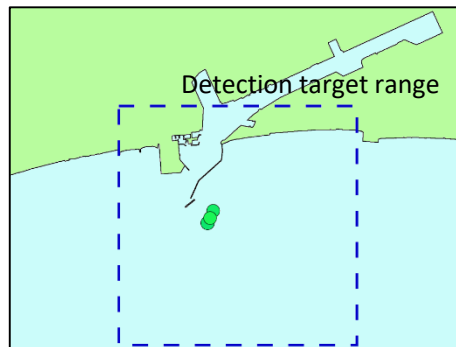
The hypocenters in the figure is from the JMA Unified Hypocenter Catalog.  
Earthquakes with the hypocenter depth of 50 km or less are displayed.

# Micro-seismic events nearby injection point

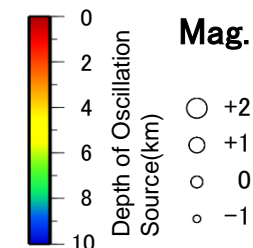
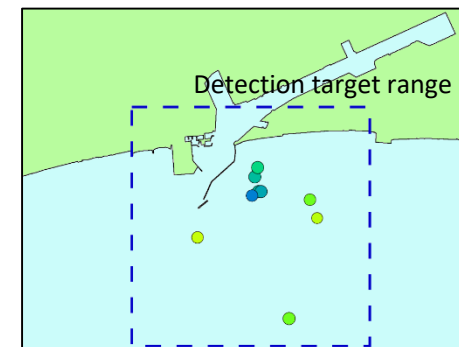
Distribution of the last 6 months (2019/11/1-2020/4/30)



During injection period (2016/4/6-2019/11/22)

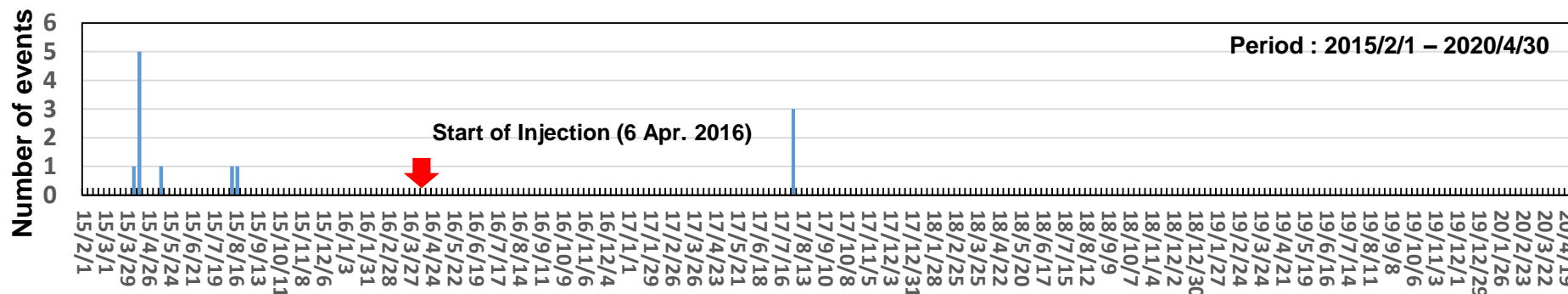


Distribution of 14 months before injection (2015/2/1-2016/3/31)



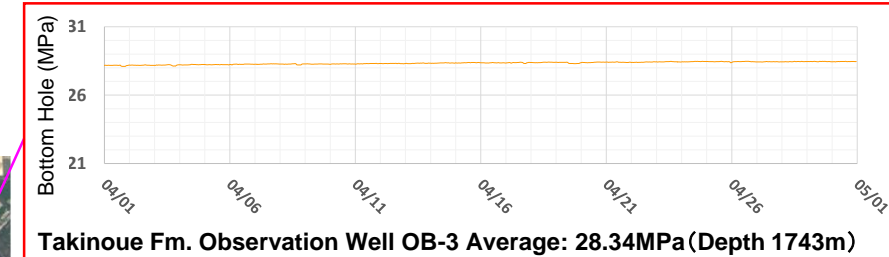
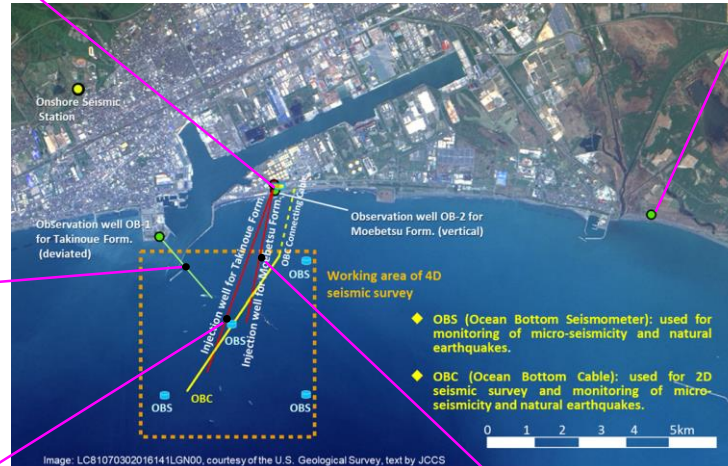
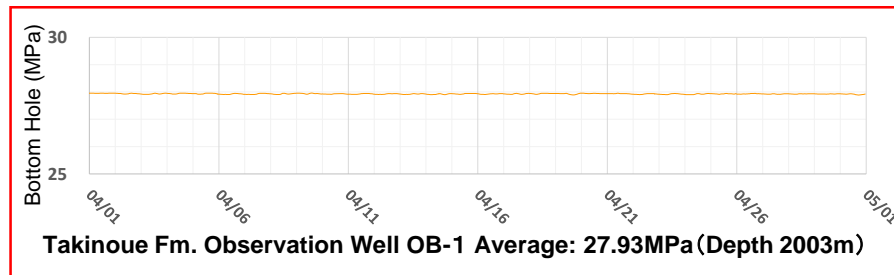
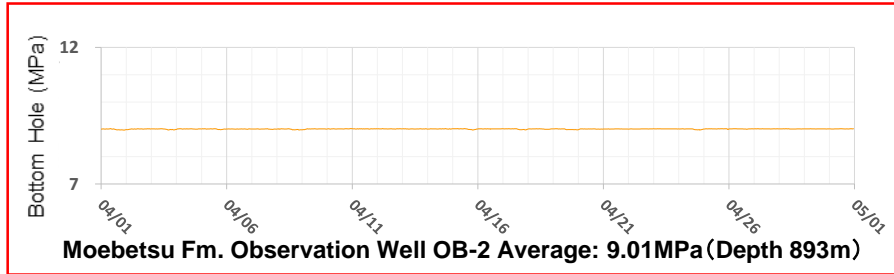
The left map is created based on the base map Information coastline data of Geospatial Information Authority of Japan.

Changes of detection of micro-seismic events (weekly)

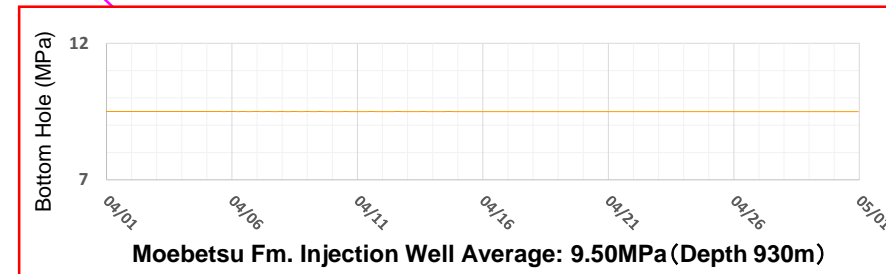
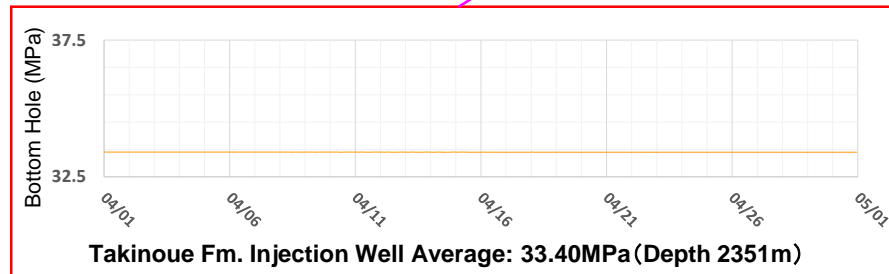


- There are perceptible earthquakes that the body feels, and imperceptible earthquakes even though actually vibrating.
- In this demonstration, the smallest (less than magnitude 1) imperceptible earthquakes are defined as micro-seismicity.
- In this demonstration, micro-seismicity with a magnitude of -0.5 or more with a depth of less than 50 km in the vicinity of the injection point are monitored, due to restrictions on the placement of observation point, constraints on seismograph detection capability, and so on.

# Observation of pressure in the wells (April 2020)

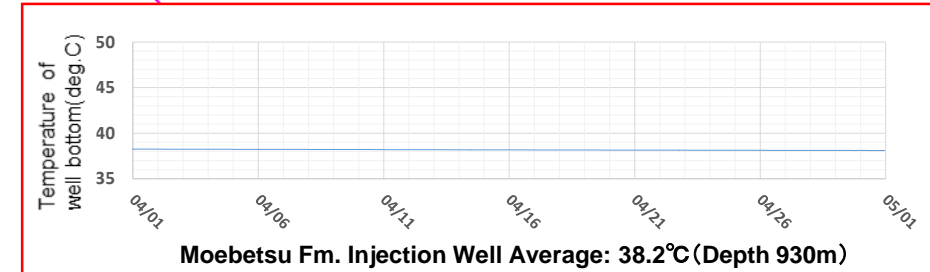
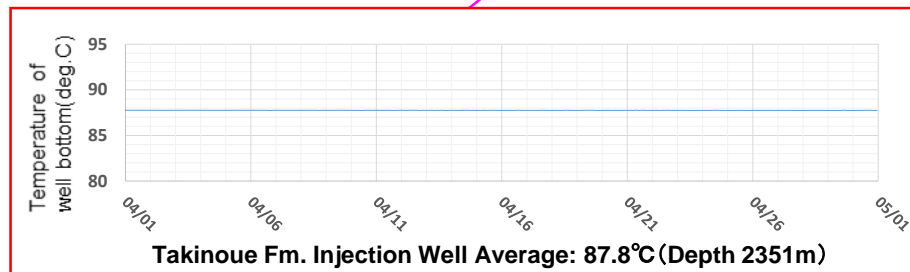
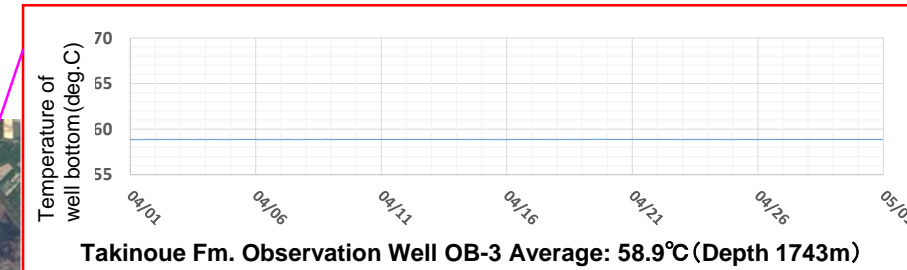
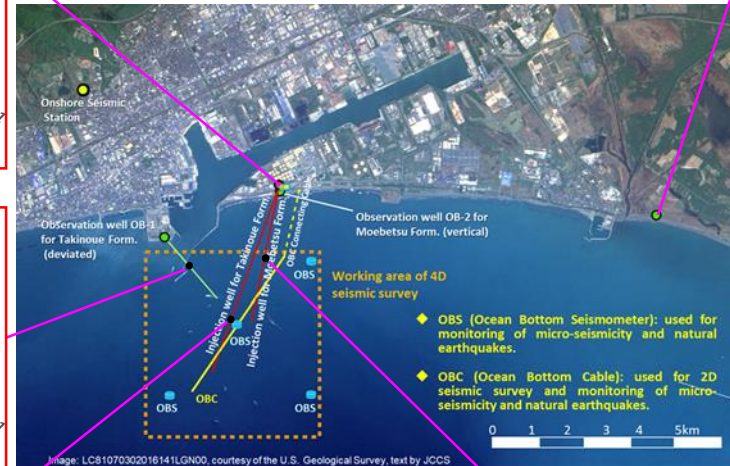
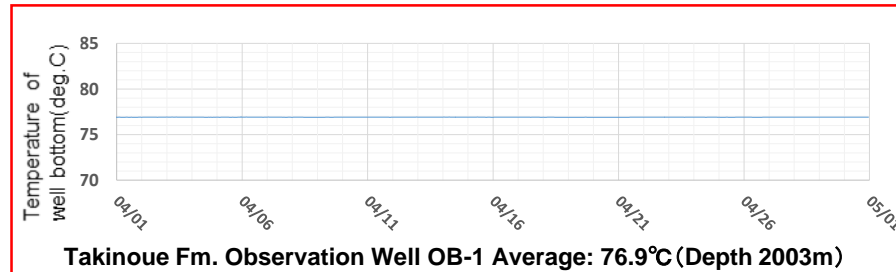
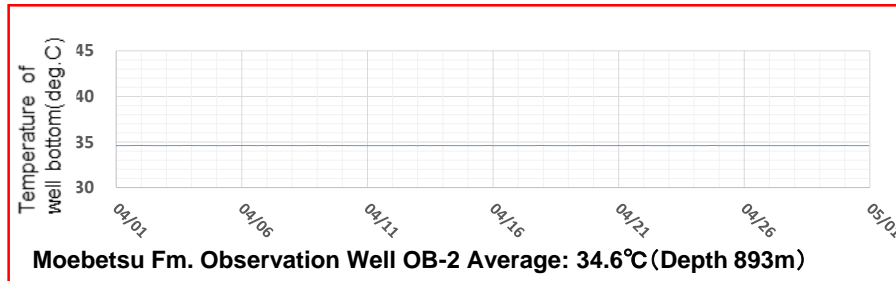


As the pressure inside the borehole was released during regular maintenance work, the pressure is reduced. It may take about six months for the pressure to recover.

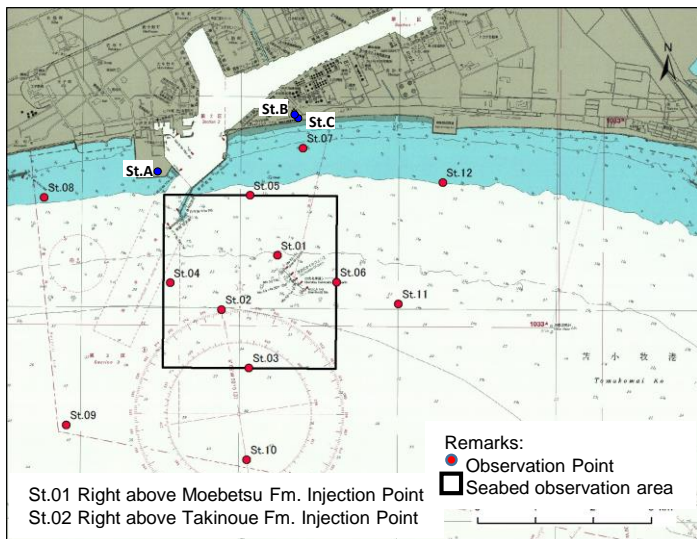




# Observation of temperature in the wells (April 2020)



# CO<sub>2</sub> Concentration around injection point (seasonal)



Cruise to the Japan Coast Guard issue navigation chart (W1034)

Seasonal observation of CO<sub>2</sub> concentration is conducted at three onshore points (St.A to C) and 12 offshore points (St.01 to 12). The concentration of CO<sub>2</sub> is indicated as

Volume ratio (unit: ppm) at the onshore observation points, and as partial pressure (unit:  $\mu$  atm) at the offshore points. The figures of the offshore points are based on the measurement at 2 meters above the seabed.

	2013				2014				2015				2016				2017				2018				2019			
	Spring	Smmr	Fall	Winter	Spring	Smmr	Fall	Winter	Spring	Smmr	Fall	Winter	Spring	Smmr	Fall	Winter	Spring	Smmr	Fall	Winter	Spring	Smmr	Fall	Winter	Spring	Smmr	Fall	Winter
St.01		323	425	388	424								372	401		339	228	474	410	403	301	386	348	304	351	402	528	
St.02		364	432	393	428								475	389		351	255	484	440	399	308	454	371	307	346	415	497	
St.03		343	410	377	420								477	386		347	254	431	424	390	328	450	355	280	427	415	550	
St.04		351	399	393	436								432	394		335	239	485	440	395	312	384	355	248	324	428	499	
St.05		326	352	387	430								370	416		309	247	354	372	369	256	348	356	261	300	360	562	
St.06		283	417	395	424								411	366		332	259	450	426	390	306	408	356	303	325	435	545	
St.07		314	353	368	424								358	517		316	273	371	384	366	270	343	355	216	307	364	530	
St.08		370	349	366	327								360	439		316	277	320	366	375	276	356	327	228	313	409	510	
St.09		358	395	379	417								437	391		335	276	423	428	391	346	437	369	302	417	407	544	
St.10		353	395	372	415								477	394		333	266	423	420	374	337	423	353	269	407	412	565	
St.11		350	415	394	418								443	391		338	264	448	436	384	310	397	353	330	319	408	542	
St.12		317	377	383	420								334	447		334	252	349	383	389	260	348	344	263	305	400	556	
St.A					396	379	412	400	397	394	399	424	417	404	407	432	414	404	414	413	411	395	401	419	430	411	454	
St.B					365	382	405	407	400	394	388	415	411	397	405	417	413	392	408	414	412	395	423	424	425	411	429	
St.C					403	395	403	403	392	406	396	409	423	410	412	403	413	417	428	417	427	404	421	421	430	414	438	

\* Offshore observation was not conducted in fall 2016.

19/19